

FOR SALE

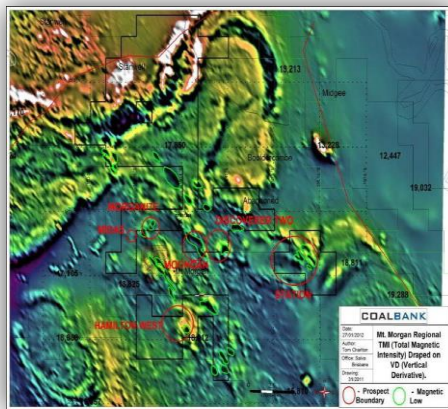
Two prospective exploration projects comprising four (4) Exploration Permits for Minerals (“EPMs”) located in Australia’s north-eastern state of Queensland available for immediate sale.

Mount Morgan Project

Centred on the town of Mount Morgan, south-southwest of Rockhampton in central-east Queensland, Australia. The project covers 65.9km² with access to regional roads, electricity rail and port infrastructure.

Of note is the proximity of the project to Carbine Resource Limited’s Mount Morgan gold mine. The Mount Morgan mine is a former gold-copper mining operation, which exploited shallows volcanic-hosted massive sulphide mineralisation.

The Company’s primary exploration focus has been for massive Mount Morgan Style sulphide mineralisation within the Morganite- Hamilton corridor. The secondary focus had been to discover and develop mineable tonnages of copper-molybdenum over the Mount Morgan-Station Cree and Struck- Oil-Moongan corridors. There is also potential for skarn mineralisation given the presence of extensive limestone deposits in the surrounding area.



Chillagoe Project

Located north of the township of Chillagoe approximately 210km northwest of Cairns, the Project covers units of the Chillagoe Formation, which is the same geological host as to the Mungana and Red-Dome copper-gold mines, some 100kms to the south. Project covers a total area of 242.8km².

Previous exploration has defined laterally extensive (1,200m) strike length moderate (>200ppm) copper in soil geochemical anomaly. Drilling to date has encountered breccias and elevated copper grades at shallow depths.

Historical workings were mined in the nearby Mungana goldfields between 1888 and 1926, producing 31,831t of lead, 7,907t of Copper and 3,229Moz of Silver from 333,591t of ore.

An Information Memorandum listing the EPMs and including information on location, history, geology and prospectivity is available upon request and provision of enquirer’s details to info@miningtenements.com

www.MiningTenements.com

Mining Asset Marketing Service

